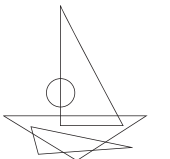




## DUFOUR 48 CATAMARAN

*Our Dufour 48 Catamarans are perfectly equipped for endless entertainment and relaxation, both on board and in the water, ensuring a unique and unforgettable holiday.*



THRACE YACHTING



## AN UNFORGETTABLE HOLIDAY ON THE WATER

Whether as a family or a group of friends, sailing Greece onboard our Dufour catamarans promises an unforgettable holiday. Skippered and fully equipped with everything you need for maximum enjoyment, all that's left for you to do is sit back, relax and lose yourself in the magic of the Greek islands.

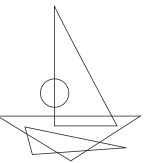




## ENDLESS OPTIONS FOR ENTERTAINMENT

Make the most of the warm, crystal-clear waters with our selection of water toys including two SUPs, water scooter, snorkel and mask sets and more. A larger powerful tender means you can reach secluded bays or go onshore quickly and easily.

Inside the boat, nights and days can be filled with a selection of board games, books, and a Bluetooth sound system.



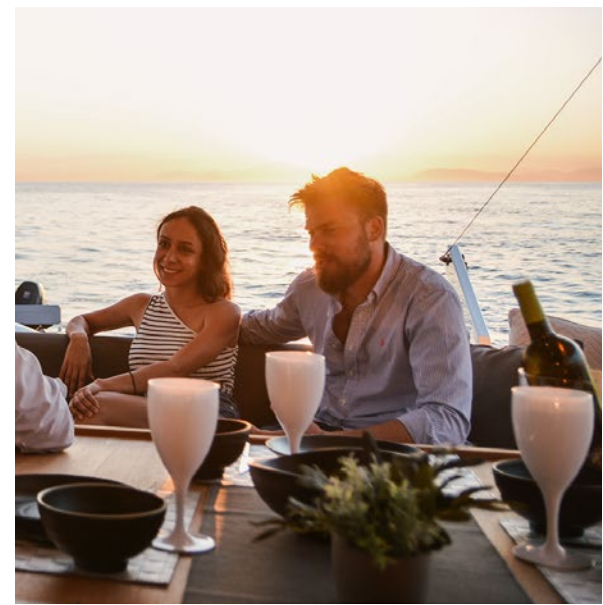


## FIND YOUR OWN SPACE FOR PURE RELAXATION

With five distinct areas, everyone will be able to find their own spot to relax and enjoy. A large flybridge with a great seating area and drinks table, sun loungers under the sails, the open-plan indoor-outdoor dining areas, and a spacious sunbathing deck and net guarantee everyone's needs are catered for.



THRACE YACHTING

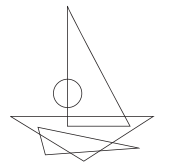




## NO COMPROMISE ON COMFORT

Beautiful interiors that bring a touch of elegance to your surroundings. Four double cabins each with their own ensuite and complete with luxury toiletries. Unlimited freshwater (water maker), power (generator) and air conditioning.

All these features deliver the comforts you expect when on holiday, but with the added benefit that you are on the water in your own private paradise, waking up to a different view everyday.



THRACE YACHTING



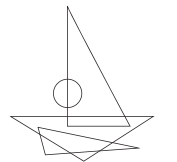
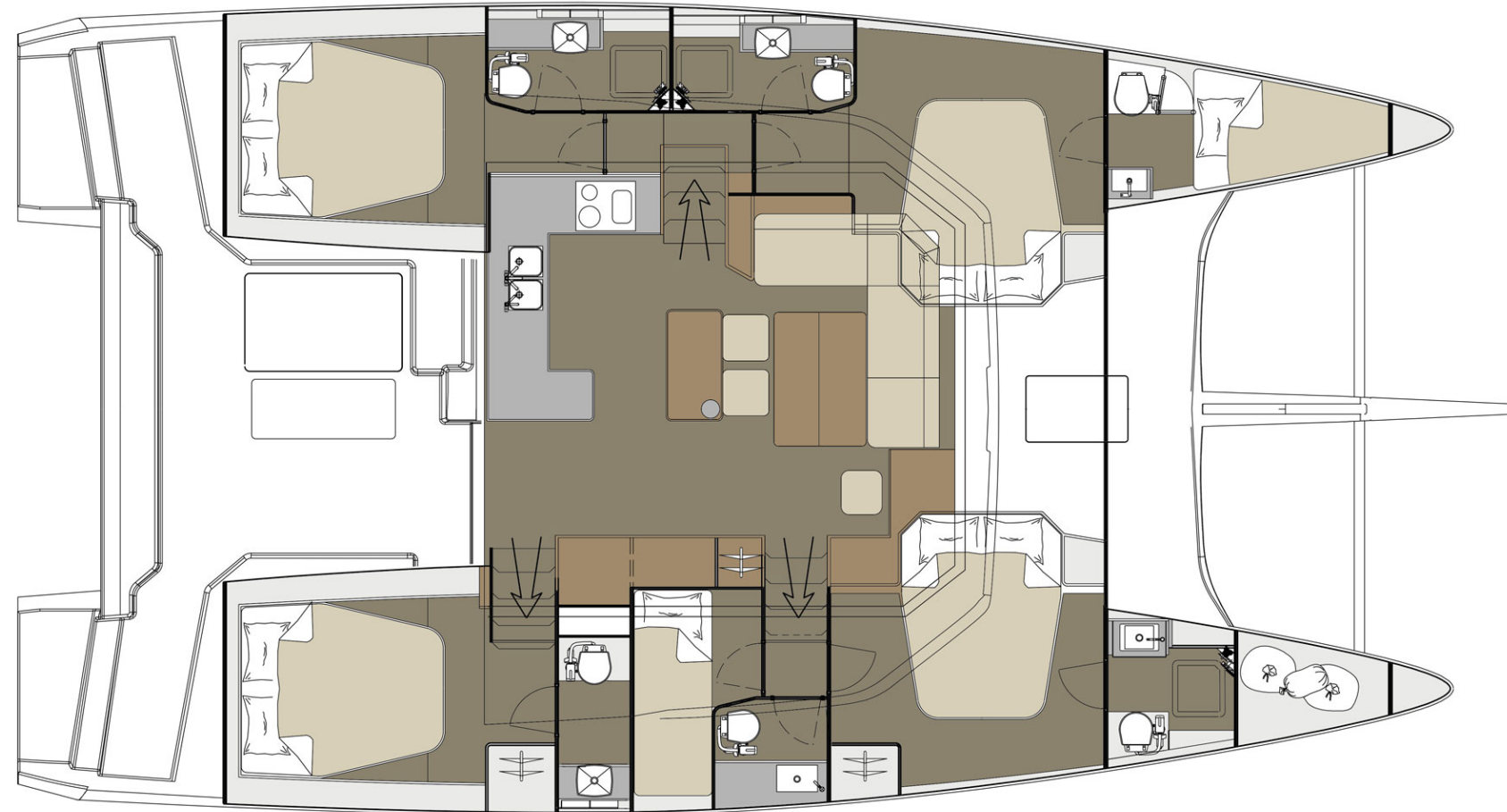


# BOAT LAYOUT AND TECHNICAL SPECIFICATIONS

YEAR: 2019/2020 | 4 MASTER CABINS + 1 PULLMAN CABIN / 5 HEADS / SKIPPER'S CABIN

<b>Overall Length</b>	14.6m
<b>Waterline Length</b>	14.10m
<b>Max Beam</b>	8.00m
<b>Light Displacement</b>	14,000kg
<b>Draft</b>	1,30m
<b>Fuel tank</b>	900lt
<b>Water tank</b>	460lt
<b>Engine power</b>	2x60hp
<b>Sail area</b>	120m <sup>2</sup>
<b>Mainsail</b>	72m <sup>2</sup>
<b>Genoa</b>	48m <sup>2</sup>

BOAT LAYOUT



## FULLY EQUIPPED TO MAXIMISE ENJOYMENT

No detail has been overlooked to ensure a pleasurable sailing experience.

### MAIN EQUIPMENT

- Flying bridge
- Multiple sun loungers
- BBQ / Plancha on deck
- Nespresso machine
- Cockpit fridge
- Large and powerful tender
- Autopilot
- Air conditioning
- Generator
- Water maker
- Inverter
- Raymarine Axiom Pack



## FULL EQUIPMENT & INVENTORY LIST

**COMFORT:** Water maker, air-condition, generator, inverter, 220v & USB sockets, hot water, light oak Interior, blinds with mosquito net, stereo CD/MP3 player, LED lights, indirect cozy lighting

**DECK & COCKPIT:** Teak deck on cockpit & platform, cockpit table, cockpit seat & sunbed cushions, cockpit electric fridge, BBQ-plancha, cockpit stereo loudspeakers, electric anchor windlass, main anchor-chain, swimming ladder, cockpit shower, boat hook, winch handles, dinghy, pump, oars, outboard motor, plastic bucket, water jerrycan, diesel jerrycan, engine oil, fuel funnel, deckbrush, gas bottles, spare anchor, fenders, mooring lines

**SAILS & RIGGING :** Electric halyard winch, furling self-tacking Jib, furling line led to helm station, full batten main sail, main sail German sheet, rigid boom vang, large bimini, lazy jacks & bag

**SAFETY:** Life raft, AIS class B, EPIRB, VHF-DSC, fire extinguishers, life jackets, torch light, bosun's chair, black ball, horseshoe lifebuoy, floating light, emergency helm, safety belts, box of flares, first aid kit, fog horn, hand bilge pump and handle, child lifejackets

**NAVIGATION:** Raymarine Axiom Plotter, GPS, Evolution autopilot, speed log, echo sounder, wind instruments, cockpit compass, hand bearing comp, divider, parallel ruler, Greek waters pilot, plotter, clock, binoculars

**LINEN:** Set of bed linen, pillows, light duvet, set of towels

**GALLEY:** Microwave, gas stove & oven, electric fridge, cutlery - kitchen equipment, pots & pans, plates, glasses, filled salt & pepper mill, Greek olive oil & vinegar, bin packs, toilet paper

**SPARES & TOOLS:** Engine's & generator spares, sails repair kit, dinghy repair kit, toolbox, boat documents, boat manuals

**WATER TOYS:** Snorkeling equipment, SUPS (stand up paddles)

**OPTIONAL EXTRAS:** Extra bed linen & towels, fishing package (fishing pole, bate, hooks, lines and sinker)



FOR ENQUIRIES **CONTACT US**



**THRACE YACHTING**  
— SAILING CHARTERS —

**MAIN OFFICE**

20 Marinou Antypa,  
Alimos 17455, Greece  
+30 210 9875090  
[info@thraceyachting.com](mailto:info@thraceyachting.com)